



NYCHOS

ASTRAL LUCENCY

AF

ARTEMIZIA
FOUNDATION

MARCH 7 - APRIL 26, 2026

GALLERY
818

NYCHOS

ASTRAL LUCENCY

This exhibition at AF's Gallery 818 offers a comprehensive insight into the multifaceted work of **Nychos**, with a strong focus on the ongoing evolution of his distinctive **translucent style**.



At the core of the show is the transition from the early, predominantly dark works that marked the beginning of this stylistic phase toward a brighter, softer, and more atmospheric color palette. The new pieces are characterized by increased lightness and transparency, while still retaining the powerful visual language and anatomical precision for which Nychos is internationally known.

Nychos increasingly experiments with golden elements that lend the subjects a heightened, almost iconic presence. These interventions elevate the motifs beyond mere representation, imbuing them with symbolic resonance somewhere between pop culture, iconography, and a sense of the sacred.

The exhibition is completed by a curated selection of prints featuring Nychos' classic works, creating a dialogue between past and present and offering a broader perspective on the development of his practice. Together, the works form a cohesive portrait of an artist who continues to push his style forward while staying true to his roots.

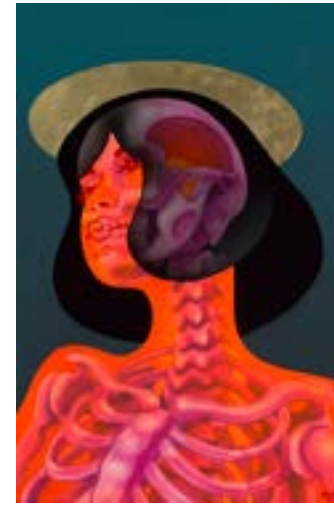




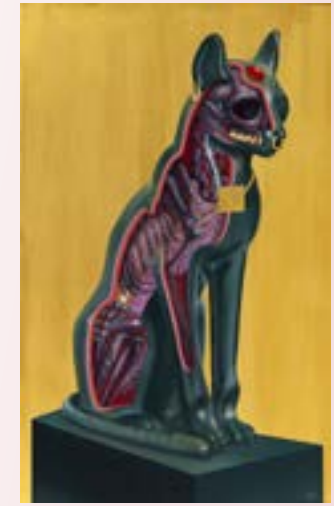
THE SACRED CREATIVE
Acrylics on canvas, 48" x 44", 2025



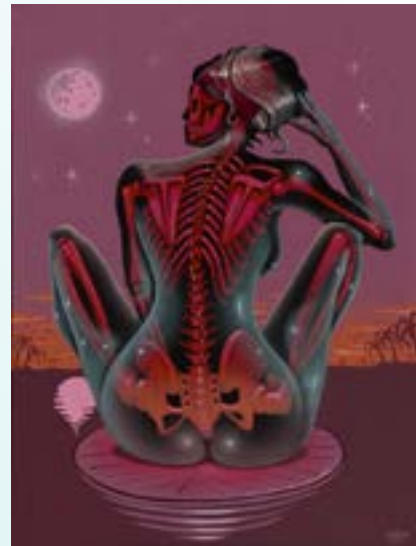
TRANSLUCENT CHEER BEAR
Acrylics on canvas, 36" x 36", 2024



CELESTIAL GAZE
Acrylics and gold leaf on wood panel,
30" x 20", 2025



EGYPTIAN FELINE
Acrylics and canvas, 48" x 30", 2025



DARK SIDE OF THE MOON
Acrylics on canvas, 48" x 36", 2020



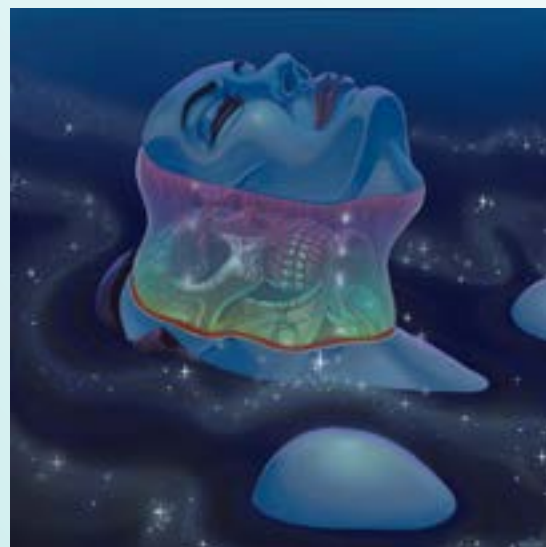
LADY AT THE LAKE
Acrylics on canvas, 36" x 36", 2024



FAWN OF LIGHT
Acrylics on wood panel, 24" x 30", 2025



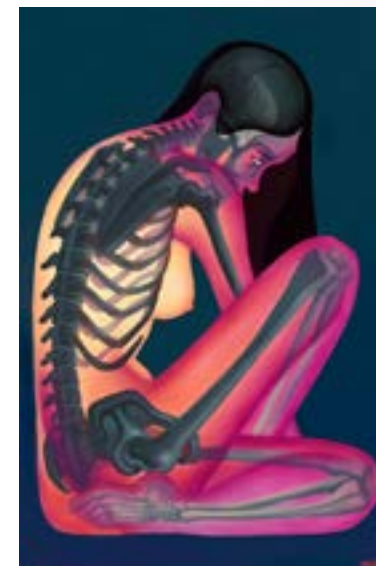
PITUITARY
Acrylics on wood panel, 30" x 40", 2025



ASCENDING FROM THE RIVER TRUTH
Acrylics on canvas, 30" x 30", 2025



23K EXHALE
Acrylics and gold leaf on wood panel, 20" x 16", 2025



BURNING EMOTIONS
Acrylics on wood panel, 36" x 24", 2025



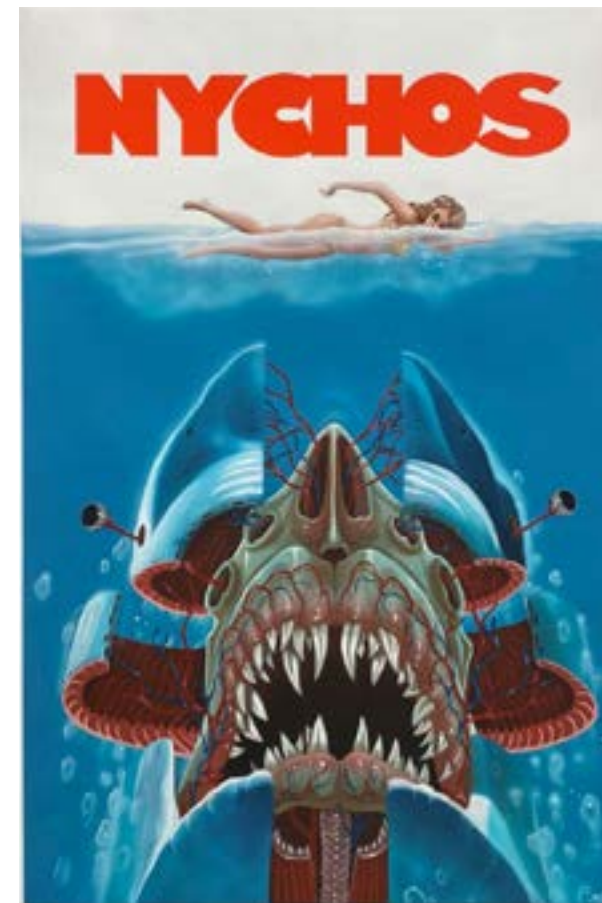
ETHEREAL WOMB
Acrylics on wood panel, 24" x 18", 2025



DISSECTION OF GOOFY
Acrylics on canvas, 72" x 48", 2022
COLLECTION OF THE ARTEMIZIA FOUNDATION



THE GREAT RED DRAGON AND THE WOMAN CLOTHED IN SUN,
27.7" x 24", Limited Edition of 111, Velvet Fine Art cotton fiber paper
Hand signed & numbered



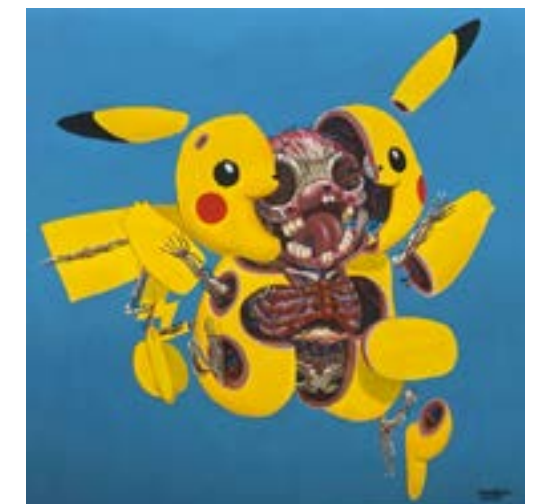
JAWS, 34.8" x 24", Limited Edition of 111,
Velvet Fine Art cotton fiber paper
Hand signed & numbered



DISSECTION OF DONALD, 28.7" x 24",
Limited Edition of 111, Velvet Fine Art cotton fiber paper
Hand signed & numbered



TRANSLUCENT PIKACHU, 24" x 24",
Limited Edition of 111, Velvet Fine Art cotton fiber paper
Hand signed & numbered



DISSECTION OF PIKACHU, 24" x 24",
Limited Edition of 111, Velvet Fine Art cotton fiber paper
Hand signed & numbered

AF ARTEMIZIA FOUNDATION

MUSEUM - GALLERY 818 - MURAL LABYRINTH - AF DIGITAL WALL - MURAL GARDEN

Be inspired by the largest collection of
contemporary, graffiti & street art in the Southwest.



PichiAvo 2018 Orphical Hymn to the Graces Spray, Acrylic and Oil on Canvas 67" x 165" (170cm x 420cm)

EXPERIENCE OVER 1000 WORKS OF ART - 150 ARTISTS - 50 MURALS

FEATURED ARTISTS

Banksy • Swoon • Shepard Fairey • Kara Walker • Cey Adams
Lady Pink • Vhils • SEN2 • Judy Chicago • Ai Weiwei • Andy Warhol

CONTEMPORARY - GRAFFITI - STREET ART

www.ARTEMIZIA.com

 @artemiziafoundation



11am to 4pm THURS FRI SAT SUN
818 Tombstone Canyon, Bisbee AZ