

JESSICA GONZALES

Jessica Gonzales is a Tucson-based artist and muralist whose work explores the layered spaces between identity, culture, and authenticity. A multicultural artist of Mexican heritage, she draws from her experience of living between worlds – questioning what it means to belong, to adapt, and to find pride in realms that resist definition. Known for her vibrant color palettes, geometric patterns, and emotionally charged portraiture, Gonzales bridges realism, abstraction, and design to reveal the complexity of selfhood.

Her paintings examine the tension between conformity and self-truth, exploring identity after a lifetime of masking and seeking acceptance. Through expressive, gestural mark-making and techniques such as alcohol spattering, she embraces spontaneity and dialogue with the medium, while leaving portions of her work intentionally unfinished to reflect the ongoing process of human transformation. Subtle references to cultural symbolism and stories from diverse communities underscore her commitment to duality and shared humanity.

While her studio paintings turn inward – probing vulnerability, neurodivergence, and emotional honesty – her mural work extends these ideas into the public sphere, cultivating a sense of connection between community and place. Her large-scale murals, including one of the largest in the state, can be seen throughout Arizona, Albuquerque, Chicago, Austin, and Washington, D.C., and her work has been featured on Netflix and in Times Square. These projects foster belonging, invite dialogue, and transform shared walls into conversations about identity, resilience, and collective experience.

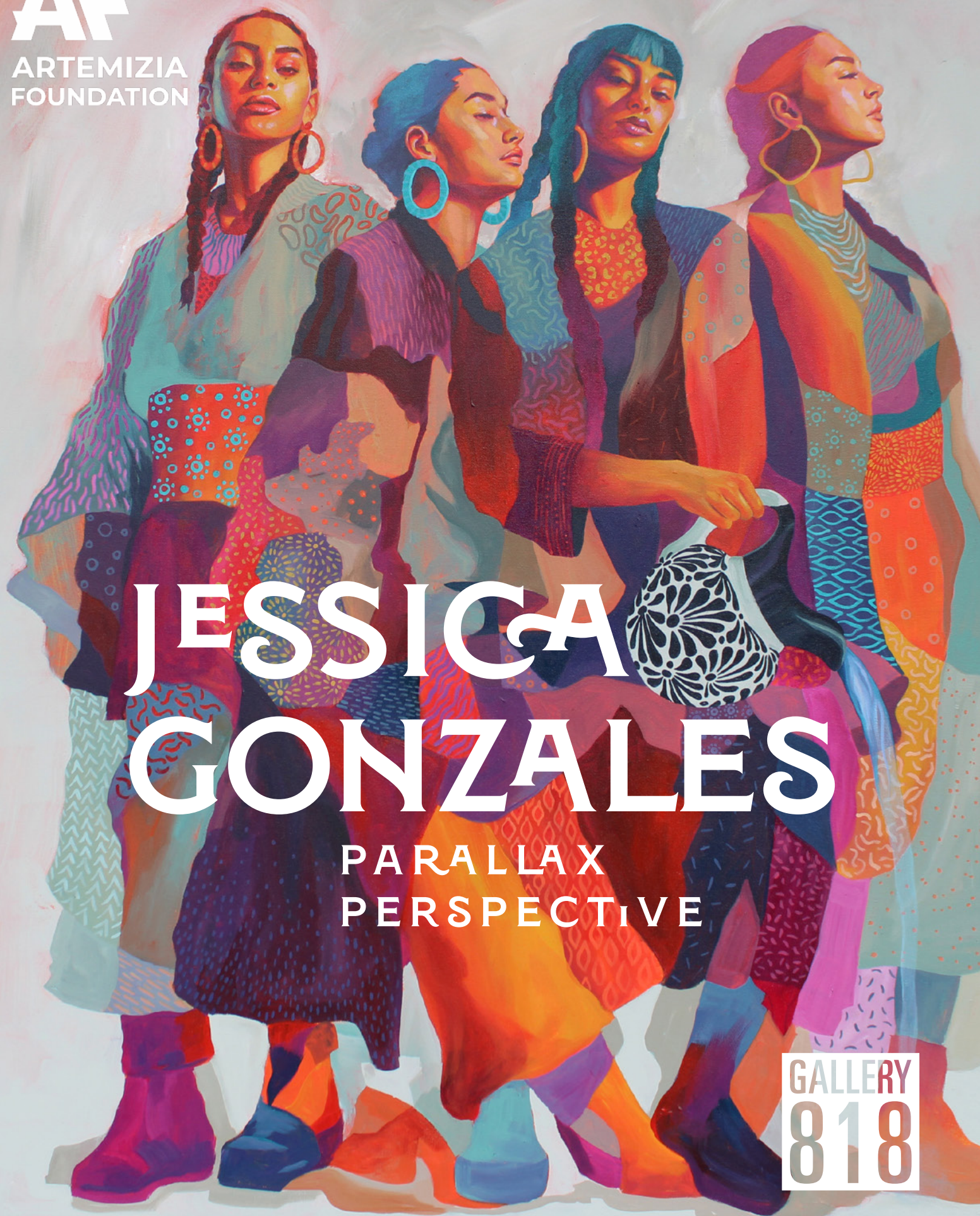
Through both intimate and monumental scales, Gonzales creates moments of recognition for those who have felt unseen or in-between. Her art invites viewers to look closer, to question what is performed versus what is true, and to find beauty in the raw, unfinished process of becoming.



818 TOMBSTONE CYN
BISBEE, AZ
ARTEMIZIA.COM



NOV 22, 2025 — JAN 4, 2026



JESSICA GONZALES

PARALLAX
PERSPECTIVE





The Parts I Choose – Pt. 1
Acrylic and rubbing alcohol on canvas
24x20"



The Parts I Choose – Pt. 2
Acrylic and rubbing alcohol on canvas
24x20"



The Parts I Choose – Pt. 3
Acrylic and rubbing alcohol on canvas
24x20"



The Silent Armor
Acrylic on canvas
48x24"



When It Ends, Let It End
Acrylic on canvas
48x24"



She Could Just Let Go
Acrylic on canvas
60x48"



Even The Sunset Has Quiet Days
Acrylic on canvas
18x24"



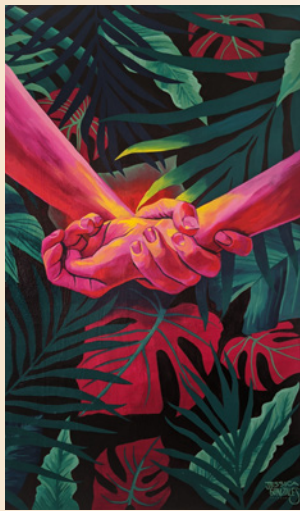
Geometry of Absence
Acrylic on canvas
20" diameter



The Bloom That Split The Sky
Acrylic on canvas
30x48"



The Fabric Remembers What I Do Not
Acrylic on canvas
48x48"



The Chase
Archival print
25x15" (30x20" with frame)



Surrender To Tides
Archival print
25x15" (30x20" with frame)



One Way Window
Archival print
25x15" (30x20" with frame)



Flux
Acrylic and rubbing alcohol on canvas
20x16"



Before It Faded, It Was Real
Acrylic and rubbing alcohol on canvas
36x48"